

## Bottle Logger Software

Compatible with  
Windows®  
3.1, '95, '98, and NT

### Features

- MS Windows® compatible.
- Easiest software to use in the industry.
- Graphical realtime display.
- User-selectable measurement units.
- Scrolling data display.
- Print to any Windows® compatible printer.
- Software included with every Bottle Logger.
- Year 2000 compliant.

### PC to Bottle Logger Communications

To setup, download or view realtime information from an ACR Bottle Data Logger; all that's required is an ACR IC-101 Interface Cable. Connection is simple. Plug the IC-101 connector into your PC's serial port and the stereo cable into the logger. The IC-101 cable is included with the Bottle Logger Interface Package.



No tools, interface cards or docking stations required.

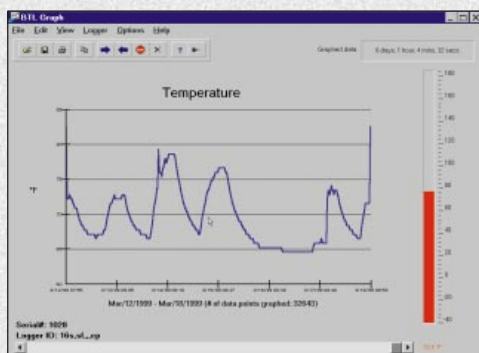
### Product Specifications

PC Connector: Female DB-9 pin connector.  
 Logger Connector: User-replaceable 3 wire male to male stereo cable.  
 Cable Length: 1.2 meters (4 feet).

|  |  |   |
|--|--|---|
| Serial Number<br><b>1028</b>                       | Logger ID<br><input type="text" value="Line One"/> | Firmware: 1.3                                   |
| Sample Rate<br><input type="text" value="16"/> sec | Start Delay<br><input type="text" value="0"/> sec  | Mode<br><input type="checkbox"/> Stop When Full |
| Logger Capacity: 6 days, 1 hour, 4 mins.           |  |   |
| <input type="button" value="Save Setup"/>          |  | <input type="button" value="Cancel"/>           |

### Fast and Easy Logger Setup

Since Bottle Logger software comes complete with built-in menus for Sample Rate, Start Delay, Settable ID and more, setup is fast and easy. Realtime readings are displayed allowing you to ensure that your logger's setup is correct before placing it in the field.



### Presentation Quality Graphs

Bottle Logger is an easy to use data analysis program for the ACR Bottle Logger. To backup the Bottle Logger's stored data or view the temperature in realtime, plug it directly into your 9 pin serial port. The software automatically displays the logged temperature readings in a graphical format as well as the current realtime reading. If you prefer to use Excel®, Lotus® or other popular spreadsheet programs, data can be exported into several ASCII formats.

### Order Information

| MODEL      | DESCRIPTION   | CATALOG # |
|------------|---|-----------|
| BL-WIN-BTL | Bottle Logger Interface Package including IC-101 and manuals. | 01-0275   |
| BL-UPGRADE | Bottle Logger for Windows® Software upgrade.                  | 01-0276   |