



Single Channel AC Current Data Logger

The compact OWL model 300 records electric current in applications where typical recorders cannot fit. Due to its small size, the OWL model 300 can go directly into an electrical panel or even inside small electrical equipment allowing the user to record electric current in a safe, discreet and convenient manner.

Features

- Optical alarm
- 10-year battery life
- 32 KB memory
- Sense AC from inside equipment

Product Specifications

Frequency Ranges: 60 Hz - A60FL and A70FL current probes.
50 Hz - A65FL and A75FL current probes.

Current Ranges:
With OWL A60FL and A65FL current probes: 5, 25, 100, 250 Amps.
With OWL A70FL and A75FL current probes: 10, 50, 250, and 500 Amps.

Accuracy: +/-4% F.S. above 10% of range.

Memory Size: 32 KB.

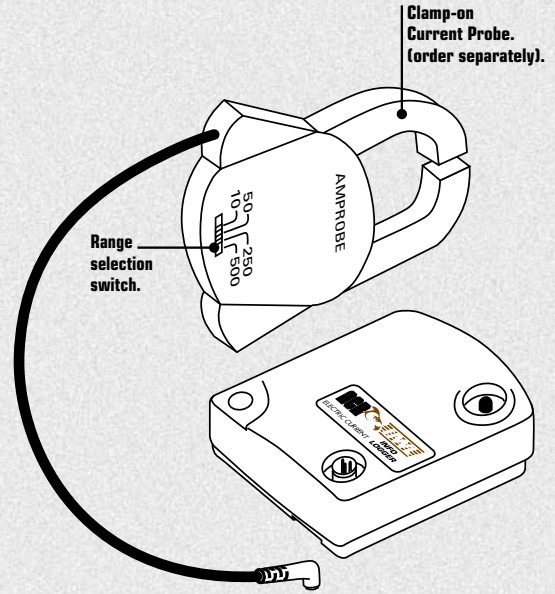
Common Specifications: See page 4.

Software Specifications: See page 5.

Accessories: OWL AC Current Probes.

Order Information

MODEL	MEMORY	CATALOG #
OWL-300-PLASTIC	32 KB	01-0252



Measurement Solutions



Four Channel AC Current Data Logger

SmartReader 3 is a data logger for easy recording of electric current. You can use this logger with up to three external current probes for recording three-phase systems or related equipment simultaneously. The probes allow accurate readings to be taken without interrupting any circuits.

Features

- 4 channels
- 10-year battery life
- User-configurable
- Accessible remotely by modem
- Network capable

Product Specifications

No. of Channels: Four. (One internal for ambient temperature and three external for use with ACR current probes).

Current Ranges:
With A60FL (60 Hz) and A65FL (50 Hz) current probes: 5, 25, 100, and 250 Amps.
With A70FL (60 Hz) and A75FL (50 Hz) current probes: 10, 50, 250 and 500 Amps.

Accuracy: +/-4% F.S. above 10% of range.

Memory Size: 32 KB.

Common Specifications: See page 6.

Software Specifications: See page 7.

Remote & Network Communications: See page 34.

Accessories: ACR AC Current Probes.

Order Information

MODEL	MEMORY	CATALOG #
SR-003	32 KB	01-0026

