

ACR JR. Data Logger Software

Compatible with
Windows®
3.1, '95, '98, and NT

Features

- MS Windows® compatible.
- Easiest software to use in the industry.
- Graphical realtime display.
- User-selectable measurement units.
- Scrolling data display.
- Print to any Windows® compatible printer.
- Software included with every JR. Data Logger.
- Year 2000 compliant.

PC to ACR JR. Communications

Nothing is simpler to use than the ACR JR. single-channel temperature JR. data logger.

The ACR JR. automatically records the temperature every two minutes – no setup is required.

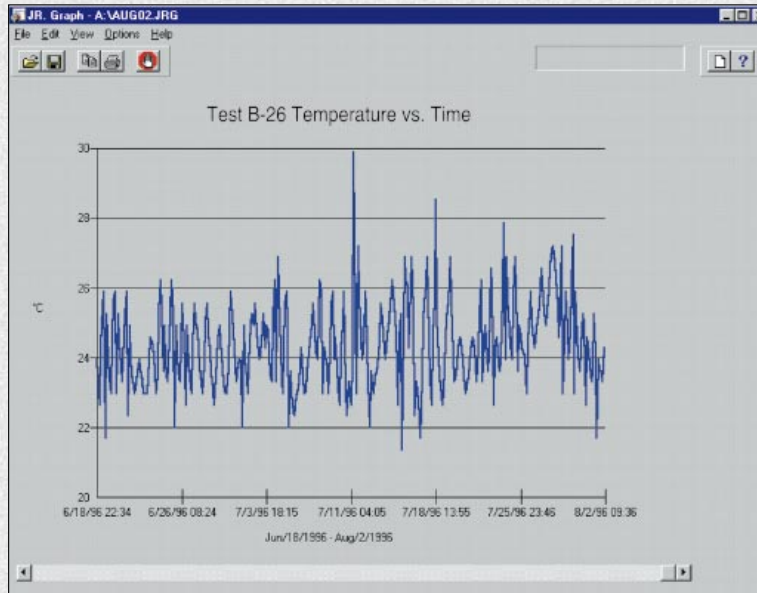
To retrieve the data from the JR., run the software program and simply plug the JR. into your PC's serial port. The software will find the logger and then display a graph of the recorded temperature vs. time on your monitor.



How the ACR JR. connects to the PC serial port.

Product Specifications

Type:	Negative Temperature Coefficient Thermistor (NTC). 10,000 ohms @ 25°C (77°F).
Range:	-40°C to 85°C. (-40°F to 185°F).
Resolution:	0.4°C @ 25°C. (0.7°F @ 77°F).
Sensor Accuracy:	+/-0.2°C. (+/-0.3°F).



Software Features

Logged temperature data is displayed on a scrolling window that permits fine analysis of large data sets. The scroll bar at the bottom of your graph window allows you to pinpoint critical areas of data. Print your temperature graph with ease using any Windows® supported printer or save the data on your hard drive for future reference. Temperature units can be displayed in Celsius or Fahrenheit.

If you prefer to use Excel®, Lotus® or other popular spreadsheet programs, data can be exported into several ASCII formats.

Order Information

MODEL	DESCRIPTION	CATALOG #
ACR-JR	JR. Data Logger Package (includes data logger and software).	01-0056