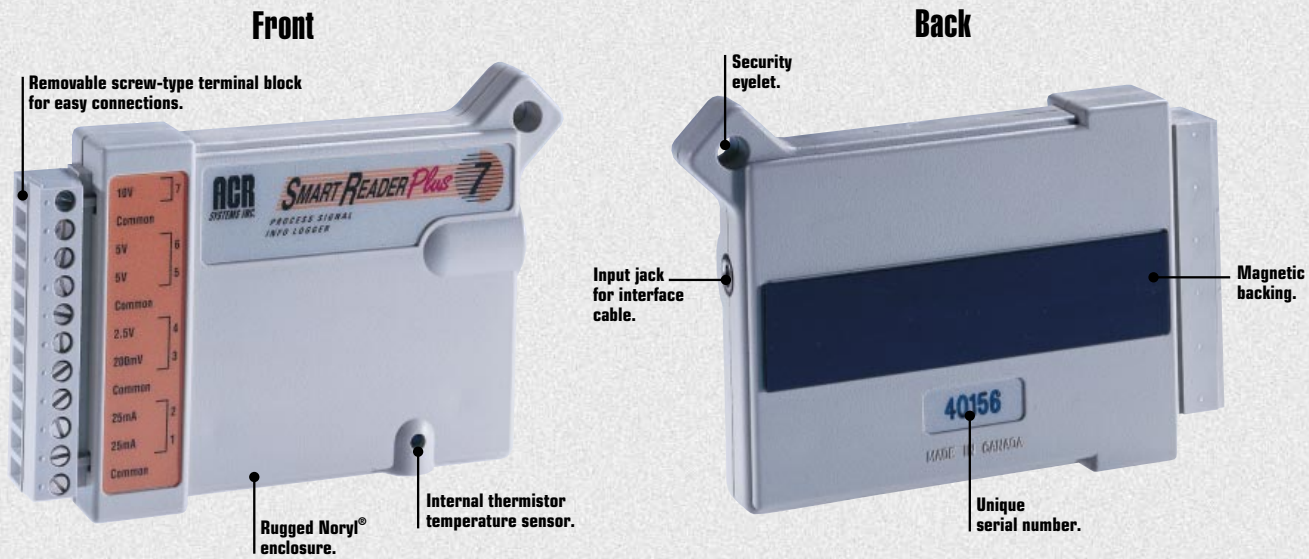


Multi-channel, Configurable, 12 Bit Data Loggers

- 1 Temperature
- 2 Relative Humidity
- 3 3 Phase Current
- 4 Pressure
- 5 3 Channel Thermocouple
- 6 8 Channel Thermocouple
- 7 Process Signal
- 8 8 Channel Temperature
- 9 Pulse
- 10 RTD Temperature

Features

- Multiple channels
- Accessible remotely by modem
- Multiple loggers can be linked to form a network
- 32 K, 128 K or 1.5 MB memory
- 10-year battery life



Product Specifications

SmartReader Plus Data Loggers share many common features. For further specifications on individual models, refer to the categorized data sheets starting on page 14.

General:

Size:	107 x 74 x 22 mm (4.2" x 2.9" x 0.9").
Weight:	110 grams (3.75 ounces).
Case Material:	Noryl® Plastic.
Operating Limits:	-40°C to 70°C (-40°F to 158°F) and 0 to 95% Relative Humidity (non-condensing).
Clock Accuracy:	+/-2 seconds per day.
Battery:	3.6 volt Lithium, 1 Amp-Hour.
Memory Sizes:	32 K (21,500 readings). 128 K (87,000 readings). 1.5 MB (1,000,000 readings). See specific models for availability.
Sampling Methods:	1. Continuous (First-in, First-out — not available with sample rates faster than 8 seconds.) 2. Stop when full (Fill-then-stop).
Sampling Rates:	User selectable rates from 25 per second to one reading every 8 hours. (BP-101 battery pack or PS-201 Power Supply required for sample rates faster than 8 seconds. See Accessories section for details).
Resolution:	12 bit (1 part in 4096).
Power Consumption:	5 to 10 microamps (continuous).
Battery Life:	10-years warrantied (under normal use). Factory replaceable.
PC Requirements:	IBM PC or 100% compatible running MS Windows 3.1, '95, '98, or NT, with a least 2 MB RAM, 2 MB of hard drive disk space and one free serial port.

Product Approvals:

Meets Part 15 for Digital Devices of the Code of Federal Regulations of the Federal Communications Commission (FCC). Meets Class A radiated and conducted emission requirements of Section 2 of the Radio Interference Regulations of Communications Canada. IEC801-2, 3, 4 and EN55011 covering ESD, RFI Immunity, EFT/Burst and Radiated Emissions respectively for the Commission of the European Communities (CE).

Resistance to X-Rays:

Tested for protection against a 160kV dose @ 5mA for 30 seconds (150mA-sec) @ 38 inches F.F.D. (about 100 times that of an airport X-Ray machine). Tested for protection against Gamma Ray (equivalent to 0.137-1.38 mega volts) IR 192 - 28 curies @ 30 second exposure source to object distance 5".

Internal Temperature Sensor (common on all models, except model 9):

Type:	Negative Temperature Coefficient Thermistor. 10,000 ohms @ 25°C (77°F).
Tolerance (sensor only):	+/-0.2°C, over the range of 0 to 70°C (+/-0.3°F, over the range of 32 to 158°F).
Range:	-40 to 70°C (-40 to 158°F).
Resolution:	0.03°C (0.05°F) at 25°C (77°F). Better than 0.07°C (0.12°F) between -25°C (-13°F) and 70°C (158°F). Better than 0.13°C (0.23°F) between -40°C (-40°F) and -25°C (-13°F).