

SmartReader Plus Data Logger Software

Compatible with
Windows®
3.1, '95, '98, and NT

Features

- Serial port interface
- Simple logger setup window
- Compound multiple graphs to a resultant graph
- Export data to most spreadsheet formats
- Interface with remote loggers via modem
- Year 2000 compliant

Presentation features:

- Multi-graph display
- Zoom
- Scale units
- Add Comments
- Data table view

PC to SmartReader Plus Communications

To setup, download or view realtime information from an ACR SmartReader Plus Data Logger, all that's required is an ACR IC-101 Interface Cable. Connection is simple. Plug the IC-101 connector into your PC's serial port and the stereo cable into the ACR Data Logger. The IC-101 cable is included with the ACR TrendReader® Interface Package. No tools, interface cards or docking stations required. To setup, download or view realtime information from any number of loggers at once, locally or over a modem, see page 34 regarding Networking and Remote Communications.



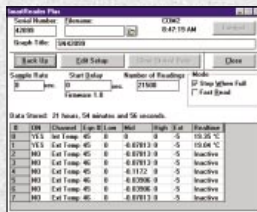
How the IC-101 connects between the SmartReader Plus Data Logger and the PC serial port.

Product Specifications

PC Connector:	Female DB-9 pin connector.
Logger Connector:	User-replaceable 3 wire male to male stereo cable.
Cable Length:	1.2 meters (4 feet).

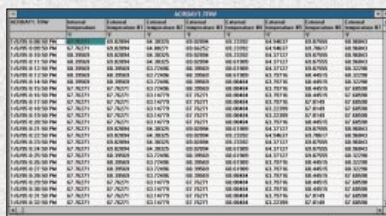
TrendReader® Software

TrendReader® for Windows® is a powerful, versatile, and easy to use software package designed exclusively for ACR's SmartReader, SmartReader Plus and OWL Data Loggers. Powerful features and easy setup enables logged data to be collected and thoroughly analyzed in seconds.



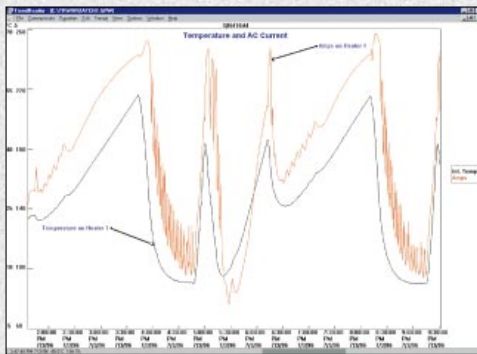
Fast and Easy Logger Setup

Since TrendReader® comes complete with built-in menus for Sample Rate, Start Delay, Equations and more, setup is fast and easy. In addition, equations are already included for all ACR accessories so users need only select the appropriate equation from the menu. Realtime readings are displayed in the Setup window, allowing you to ensure that your logger's setup is correct before placing it in the field.



One-Touch Table View

With ACR's TrendReader® Software, logged data can be viewed in Table format to permit detailed analysis of logged data. Multiple channels of data can be displayed at once with each reading displaying the time and date. You can even select portions of, or all the table information and paste it into your favorite Windows® presentation or word processing programs.



Presentation Quality Graphs

TrendReader® allows you to present logged data the way you want. Multiple logged data sets can be displayed and compounded to create new graphs. For added presentation power, TrendReader® lets you add comments, change graph colors, zoom in on specific portions of data, display your data using custom engineering units and print to any Windows® compatible printer with ease. TrendReader® even lets you copy/paste your graphs directly into your case reports. If you prefer to use Excel®, Lotus® or other popular spreadsheet programs, data can be exported into ASCII and CSV formats.

Order Information

MODEL	DESCRIPTION	CATALOG #
TR-WIN-SRP	TrendReader/SmartReader Plus Complete Interface Package including IC-101 and manuals.	01-0072
TR-UPGRADE	Latest TrendReader Software for Windows® upgrade.	01-0280